



STANSFORD INTERNATIONAL HR. SEC. SCHOOL
Holistic Education
Pitchaveeranpet, Moolakulam, Puducherry – 605 010.
CBSE AFFILIATION NO.: 2930016

UNIFORM STITCHING PATTERN FOR ACADEMIC YEAR 2024-2025

Pre.K.G. to U.K.G.

Boys : Half sleeved shirt with half trousers.

Girls : Half sleeved shirt with half trousers.

Grade I to IV

Boys : Half sleeved shirt with half trousers.

Girls : Half sleeved shirt with skirt.

Grade V to X

Boys : Half sleeved shirt with full trousers.

Girls : Half sleeved shirt with over coat and full trousers.

Grade XI to XII

Boys : Full sleeved shirt with full trousers.

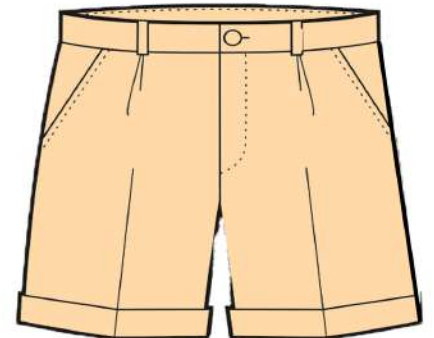
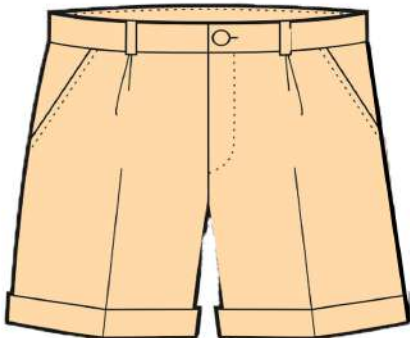
Girls : $\frac{3}{4}$ sleeved shirt with over coat and full trousers.

STANSFORD INTERNATIONAL
HR.SEC.SCHOOL

BOYS

GIRLS

PRE-KG,LKG,UKG



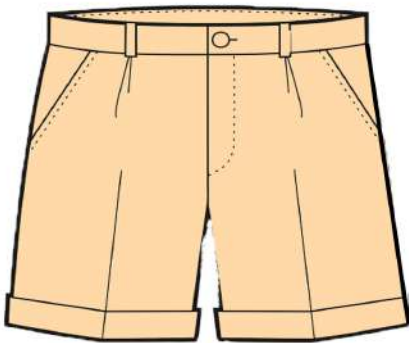
**CAUVERY SILKS
PONDICHERRY**

STANSFORD INTERNATIONAL
HR.SEC.SCHOOL

BOYS

GIRLS

GRADE 1 - GRADE 4



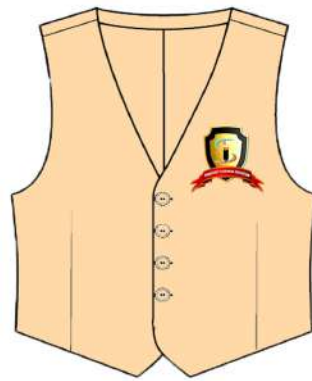
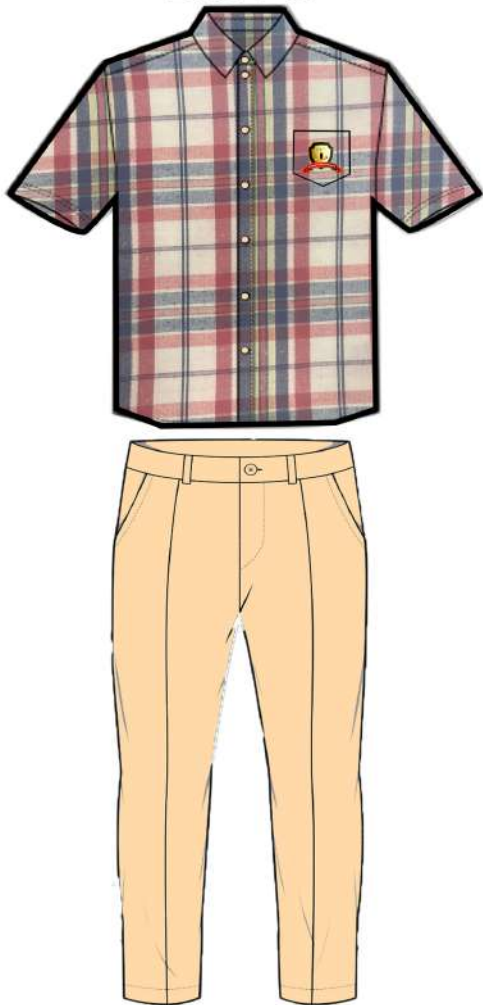
**CAUVERY SILKS
PONDICHERRY**

BOYS

**STANSFORD INTERNATIONAL
HR.SEC.SCHOOL**

GIRLS

GRADE 5 - GRADE 10



**CAUVERY SILKS
PONDICHERRY**

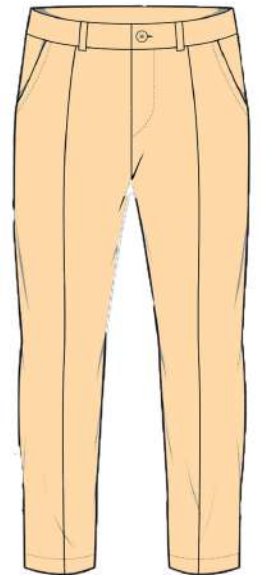
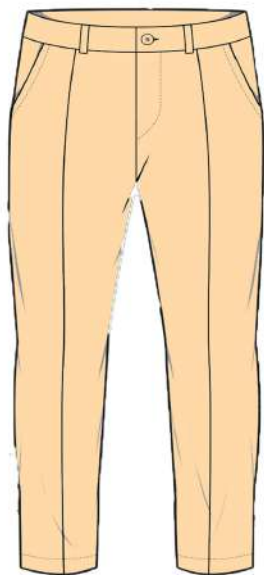
BOYS

**STANSFORD INTERNATIONAL
HR.SEC.SCHOOL**

GIRLS



GRADE 11 - GRADE 12



**CAUVERY SILKS
PONDICHERRY**